

Providence R.I.  
This plat accompanies  
our report of this date

PROVIDENCE, R.I.  
CITY ENGINEER'S DEPT.  
STREET LINE DEPT.

# PLAT OF CHESTNUT STREET

FROM BROAD ST. TO POINT ST.

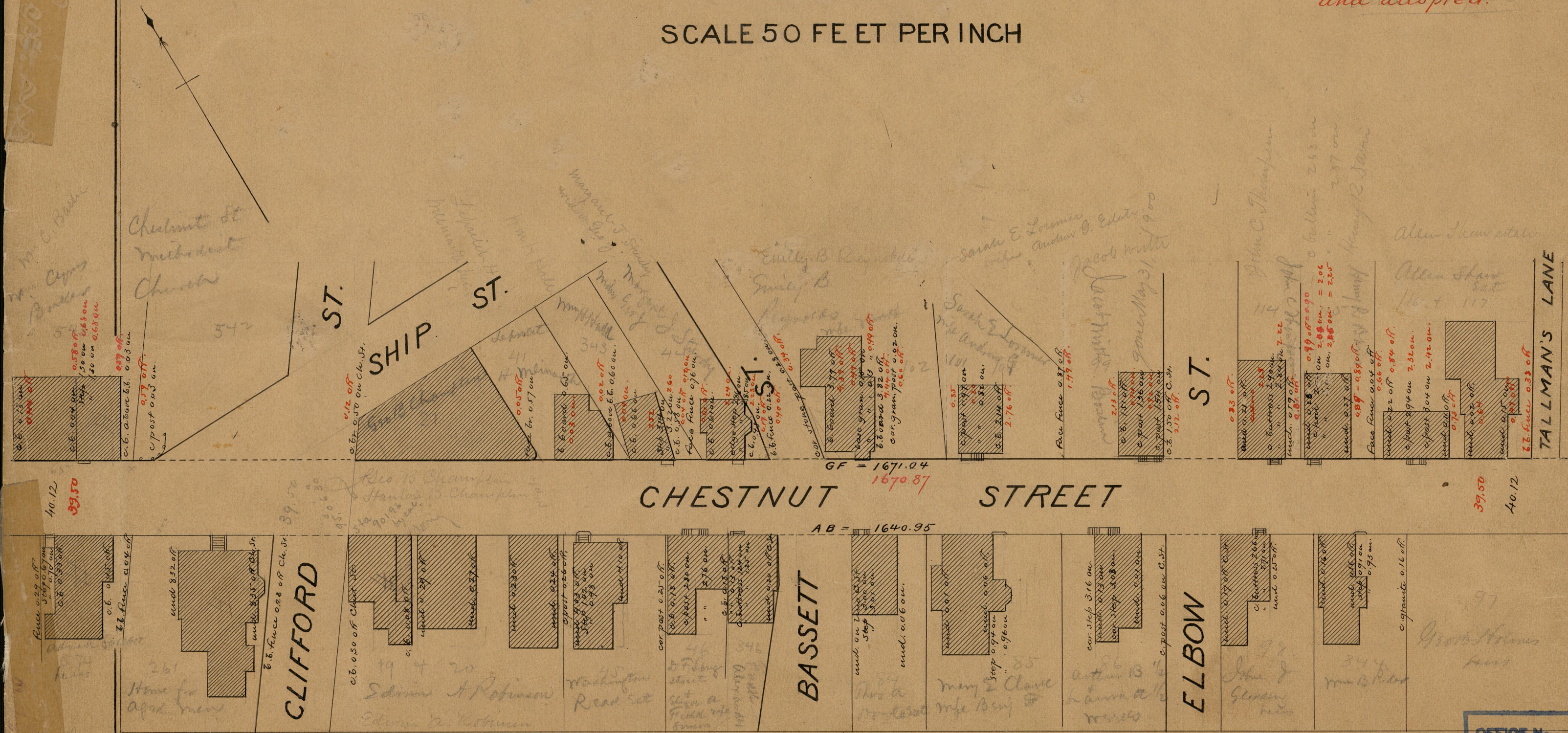
IN THREE SHEETS

SCALE 50 FEET PER INCH

Mar. 28, 1889

014843

Red notes added Aug. 1890  
and adopted.



CHESTNUT STREET

CLIFFORD

BASSETT

ELBOW

TALLMAN'S LANE

OFFICE No.	9996
DRAWER	83
SHEET	B-77